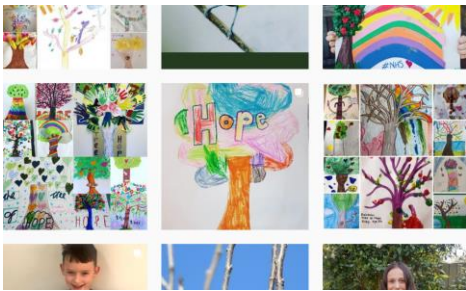


Planting Our Future

'Re-wilding, re-connecting and re-imagining planting across the borough with community engagement, education and raising environmental awareness at its heart.'

Solihull Council have pledged to plant 250,000 trees over the next ten years as part of its commitment to tackle climate change via its 'Planting Our Future' campaign. In the last year, we have worked with numerous partners including local colleges, schools, golf clubs, community groups and charities to find homes for some of the 25,000 trees planted in the borough.

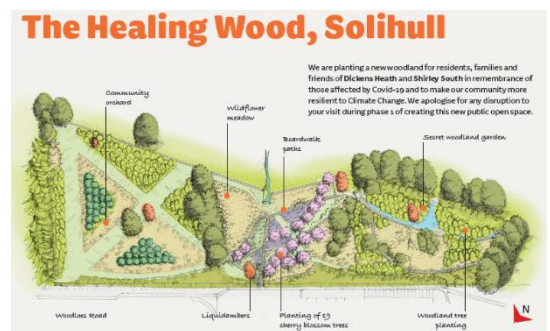
Hope Coppice



In February 2021, 19 cherry trees were planted at the entrance to Hope Coppice as a symbol of COVID remembrance and linked back to the cherry trees that were delivered to families and parish councils that took part in the 'Tree of Hope' competition last year. Families across the borough took part in drawing 'Trees of Hope' which was shared locally and with the NHS Nightingale Hospital located at the NEC and every entry got gifted with a cherry tree for their garden or school.

The first phase of Hope Coppice saw the planting of just under 1,200 trees, creating a community orchard and woodland. The woodland will be created in remembrance of those affected by COVID-19 and to make our community more resilient to Climate Change by creating further green corridors, increasing biodiversity and creating new habitats. The first phase of hard works (boardwalks, natural play etc.) will begin September 2021 and last for approximately 10 weeks.

Also within Hope Coppice, Planting Our Future will be working with Wonder Woods Forest School to develop an outdoor area that will be perfect for children to learn and play.



Armed Forces Community Garden



The Armed Forces Community Garden (AFCG) is a 'healing garden' for veterans that was completed in May 2021. **Zone 1** is where the project originated and is the community wildlife garden. From there you can walk into **zone 2** which is a summer meadow and community orchard. **Zone 3** will be community woodland and follow the Royal British Legion's 'Battleback' principles to create opportunities for active recovery. Once the garden is open, 'Planting Our Future' will invite community groups to use the area for their



activities. An event to officially open the garden will be taking place in Spring next year.

Woodlands Trust Partnership



The Woodlands Trust are continuing to support Planting Our Future and will be supplying just under 21,000 trees for this planting season (2021/22).

During this planting season we will be working with a variety of stakeholders, including: 7 schools, private land owners such as Copt Heath Golf Club, Packington Estate and more; we also have a new partnership with the National Trust. Included in our plans are the Queen's Green Canopy and Commonwealth Forest, which aim to contribute not only to the legacy of the games, but to the carbon offsetting of the first carbon neutral Commonwealth Games.

The Commonwealth Games mascot, Perry, will also be planting a tree in Solihull during National Tree Planting Week (27th Nov – 5th Dec).

Developing our brand 'Planting Our Future'



In spring 2020 Voco® St. John's Solihull and the Planting Our Future teamed up to officially launch a new orchard in Malvern Park. Since then, the team has grown, and we will be ramping up our community engagement as well as our engagement with private landowners.

Looking forward, we will be working with numerous external stakeholders to promote our green recovery. One project we are pursuing is with 'Wonder Woods Forest School' where we are looking to develop an area within Hope Coppice where children can learn and play outdoors.

We are also looking to promote activities during 'Great Big Green Week' (18th – 26th Sept) and 'Outdoor Learning Day' (4th Nov) and link them back to our campaign. Pop up events will take place, such as collecting acorns in September in readiness for planting in pots in November. Planting Our Future will look to have a stand at a Friends of Shirley Park event in order to engage with young people and include them in a 'design a fairy door' workshop. Doors will then be displayed at Wonder Woods Forest School and within Shirley Park in a 'Tree Trail' planned for the New Year. This can also be linked with education around the importance of green infrastructure and environmental awareness.

Over the next 6 months we will explore and develop:

- Working with the Solihull Tree Wardens, we aiming to engage young people in becoming Junior Tree Wardens – teaching them how to care for the trees around them.
- exploring internal partnerships in the development of rain gardens, to help tackle drainage issues in an innovative and sustainable way using green infrastructure and community engagement
- A comprehensive communications plan in place to showcase and celebrate the work we have done and have planned, including 'Love Parks Week', 'Great Big Week' and 'Tree Planting Week'.
- There is plenty more in the pipeline with a 100 tree woodland working with Soroptimists International, The new Arden Forest and lots of community planting days with businesses, schools, residents etc.!

For more information please visit our website: www.lovesolihull.org or email plantingourfuture@solihull.gov.uk
Follow us and our journey on our social media platforms and watch our plans unfold – @LoveSolihull

