

Solihull Tree Wardens News
 Solihull Tree Wardens were formed in 2000 to champion and protect the local environment's trees, hedges and woodland. The Tree Warden Scheme is a national initiative run by the Tree Council which encourages people to play an active role in conserving and enhancing their local trees and woodlands

What does it take to become a Solihull Tree Warden? Passion and a love of trees! To Plant, Protect and Promote trees

Activities the Group participate in:

- Tree planting/Aftercare
- Local woodland management
- Seed collecting to grow new trees
- Organising Tree Walks and Talks
- Tree planting/Aftercare
- Tree ID/Surveys
- Street Tree watering

Future Plans

Encourage local tree aftercare for all newly planted trees

Increase the diversity and understanding of our local trees and heritage to the community of Solihull

Actively support SMC's "Planting our Future" campaign to plant a quarter of a million trees within the Borough in the next ten years

Interested? Contact: solihulltreewardens@yahoo.co.uk

Solihull Station opened in 1852 on the Paddington to Birkenhead Line. It provides a regular service to Birmingham and London.

Tudor Grange was built in 1887 and Alfred Bird lived there in Victorian times. His egg-free "Bird's Custard Powder" is sold worldwide.

A modern Leisure Centre with swimming pool, indoor courts and a cafe

Solihull Athletics Club

Large Car Park

1 Sweet Gum/ Liquidamber
 The glossy green have 5-7 pointed lobes, and in the autumn they turn orange and red. The winter seeds are called "gumballs"

2 Hawthorn
 Small hardy tree with thorns, its variably shaped leaves are followed by pungent-smelling flower clusters in the spring and bright red berries in the autumn.

3 Snake Bark Maple
 The bark looks like snake skin with dark green/brown vertical stripes.

4 Oak
 This majestic tree is over 150 years old and the green leaves are lobed. Oak trees produce acorns in the winter.

Path/cycleway to Town Centre

5 Paper Birch
 Note the distinctive creamy white bark which peels in thin papery strips. The leaves are dark green and small.

6 Common Lime
 The large, heart shaped leaves are a dull, dark green colour. Seed pods appear on long stalks in late spring/summer

7 Copper Beech
 Almost identical to the common beech but with purple/copper coloured leaves in the spring, turning to green in summer. The seed husks are covered in coarse bristles.

8 Cherry Trees
 There are six cherry trees lining the path. Their bark is a red/grey colour with a slight sheen and is marked by shallow horizontal cracks

9 Field Maple
 The leaves have five rounded lobes and are a dark green colour. The bark becomes cork-like with age.

10 Purple Beech
 Here is another beautiful purple leaves in the spring-time, changing to green in the summer.

16 Weeping Willow
 Willows are widely grown alongside lakes and streams. This one is adjacent to Alder Brook. Its grey brown bark gets deep fissures over time.

15 Beech Tree
 This large old tree has small pointed green leaves. Its autumn seeds are called beechnuts and have a bitter taste

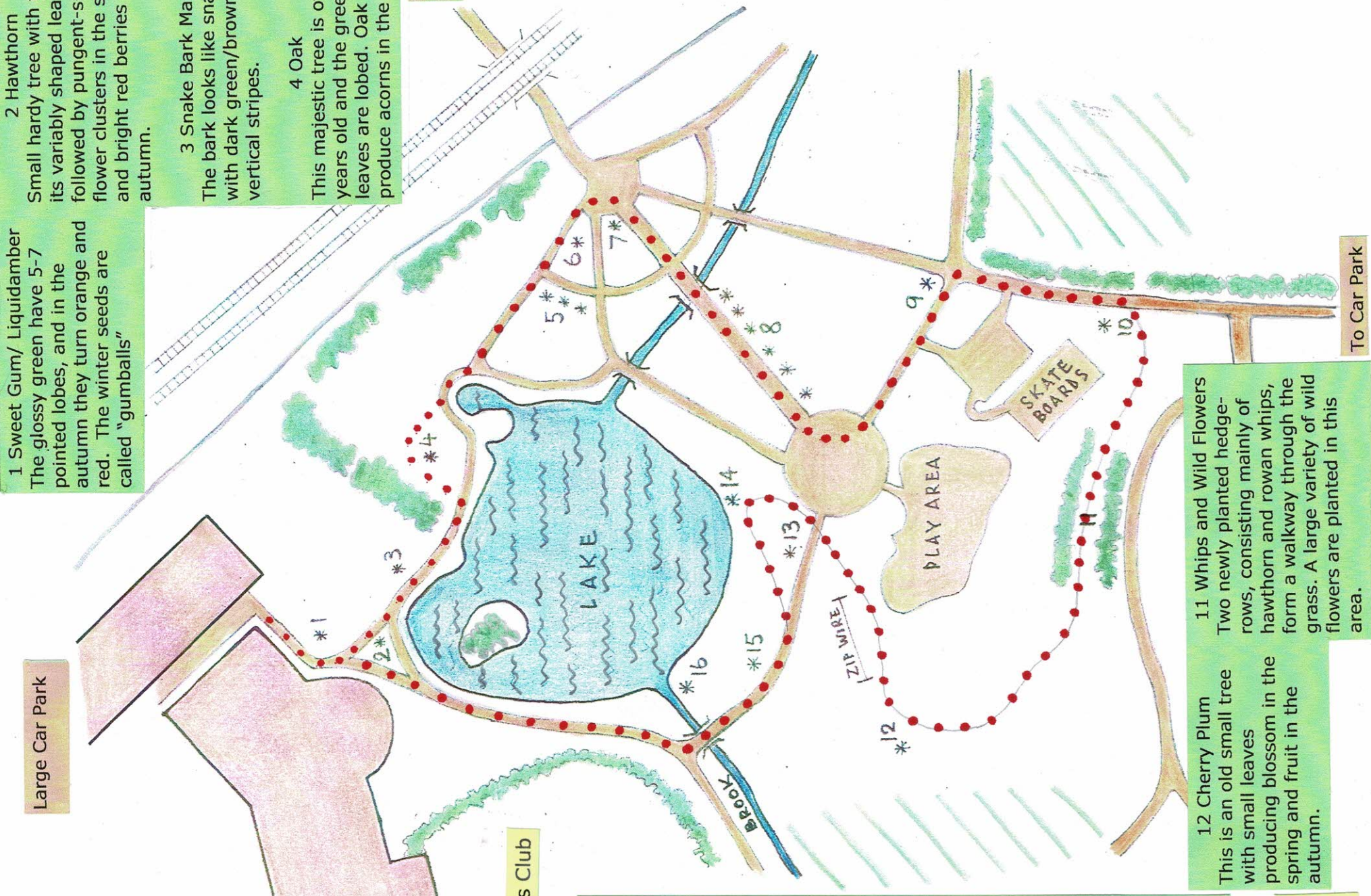
14 Crack Willow
 This large veteran tree is growing by the side of the lake—it likes to be near water. The grey-green leaves are narrow in shape

13 London Plane
 The bark on this tree has many layers — look carefully at the trunk and you will see many colours. This tree's leaves are large and shallow lobed and it can live happily in polluted city streets.

This area is used by cycling enthusiasts, who enjoy the 1km circuit around the park

11 Whips and Wild Flowers
 Two newly planted hedge-rows, consisting mainly of hawthorn and rowan whips, form a walkway through the grass. A large variety of wild flowers are planted in this area.

12 Cherry Plum
 This is an old small tree with small leaves producing blossom in the spring and fruit in the autumn.



To Car Park

Tudor Grange Park

a

Tree Trail

by
 Solihull Tree Warden Group

